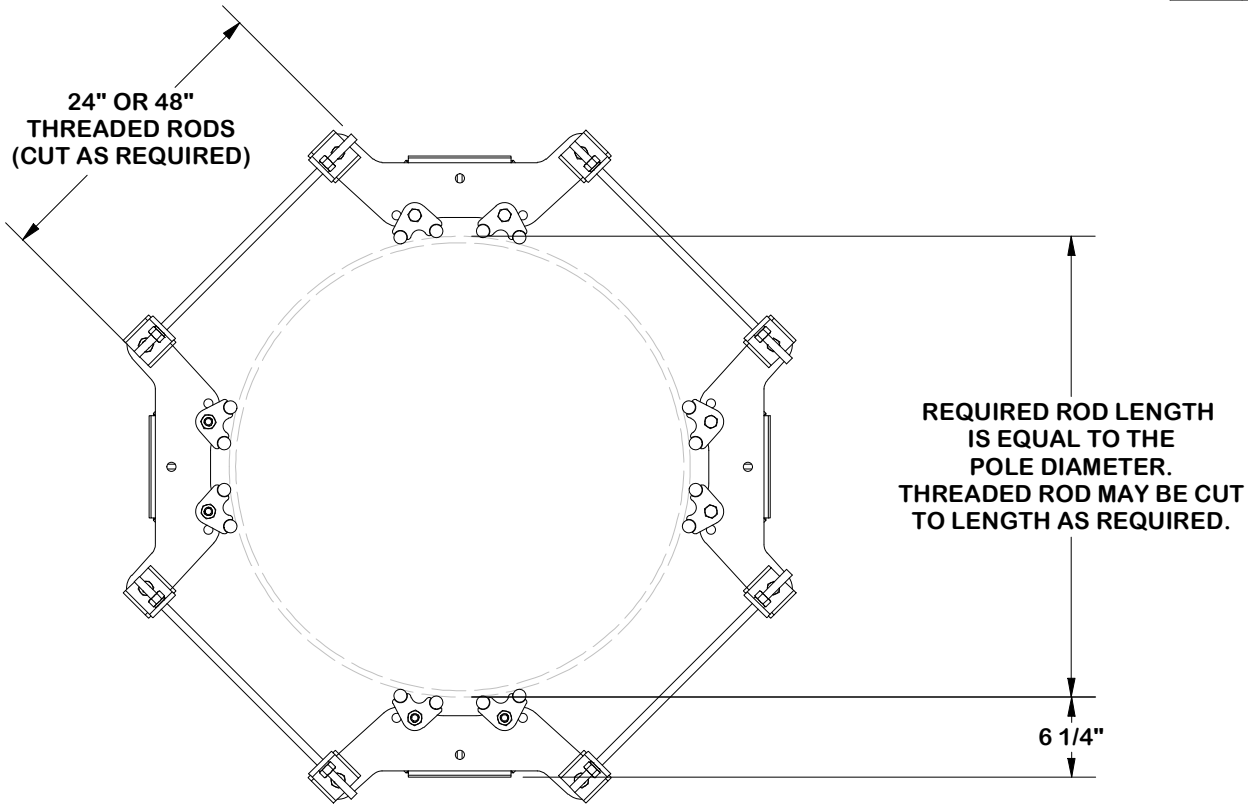
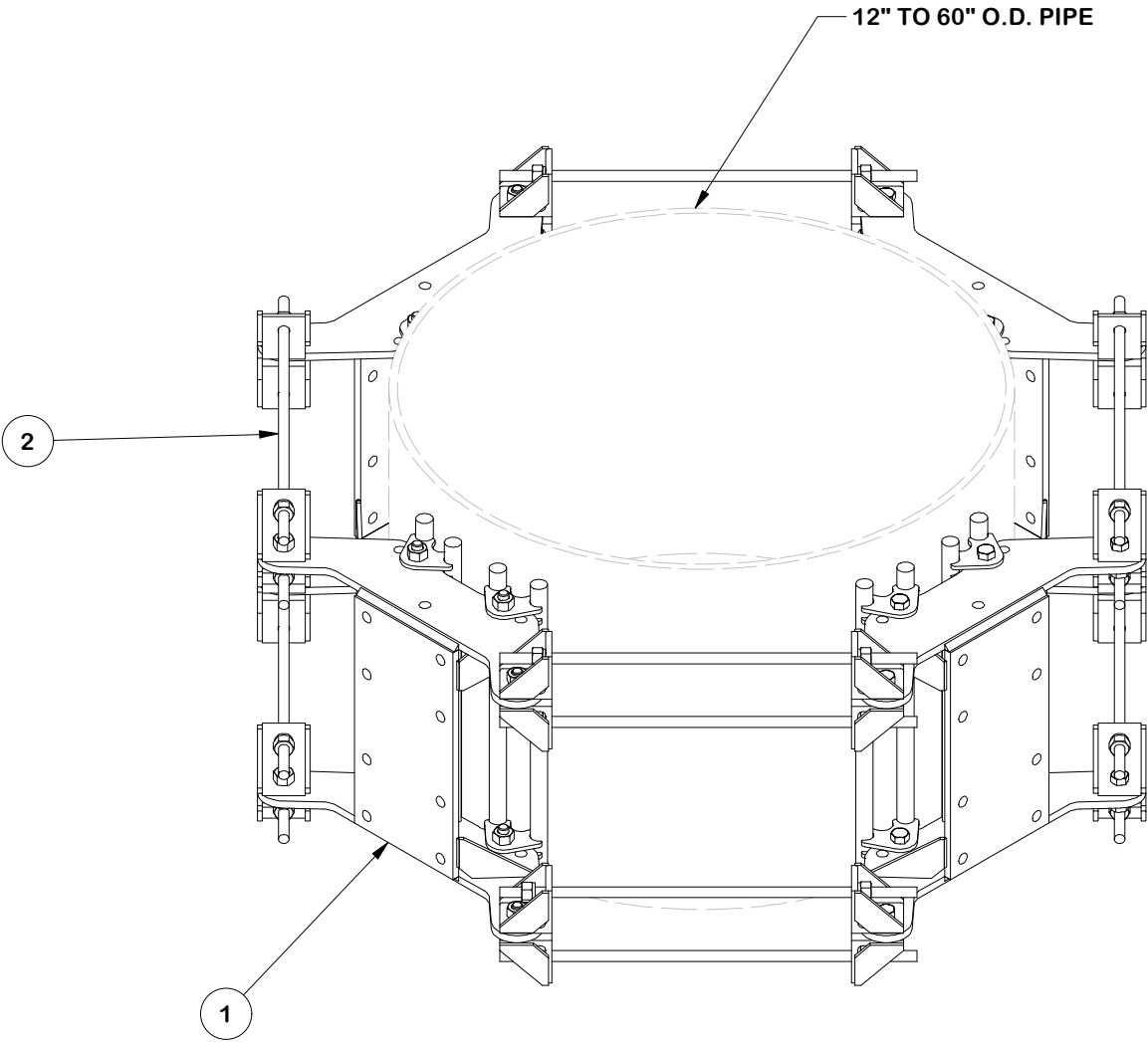
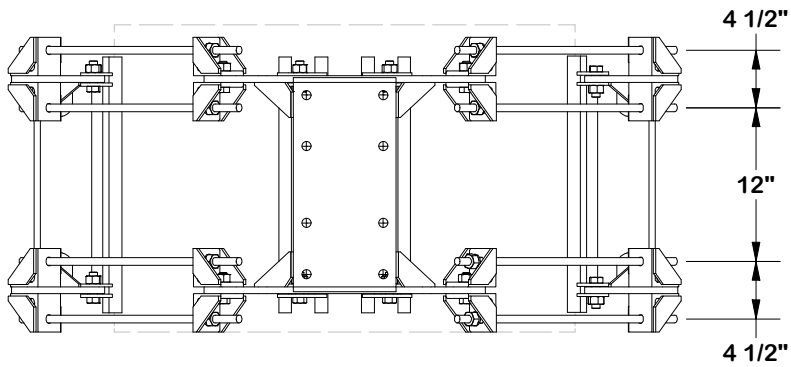


HEAVY STAMP
PART NUMBER

PARTS LIST						
ITEM	QTY	PART NO.	BOX NO.	PART DESCRIPTION	UNIT WT.	NET WT.
1	4	FLX-HDSS		FLEXIBLE RING MOUNT HEAVY-DUTY SINGLE SECTOR ASSEMBLY	98.32	393.30
2	4	HDRM-HW		FLEXIBLE RING MOUNT HARWARE KIT	27.68	110.70
					TOTAL WT. #	504.00



NOTE:
COMPATIBLE WITH 6" X 6" HOLE PATTERN AND
FORTRESS™ STANDOFF ARM



FINISH:
HOT DIP GALVANIZED.

TOLERANCE NOTES

TOLERANCES ON DIMENSIONS, UNLESS OTHERWISE NOTED ARE:
SAWED, SHEARED AND GAS CUT EDGES ($\pm 0.030"$)
DRILLED AND GAS CUT HOLES ($\pm 0.030"$) - NO CONING OF HOLES
LASER CUT EDGES AND HOLES ($\pm 0.010"$) - NO CONING OF HOLES
BENDS AND ANGLES ARE $\pm 1/2$ DEGREE
ALL OTHER MACHINING ($\pm 0.030"$)
ALL OTHER ASSEMBLY ($\pm 0.060"$)

PATENT INFORMATION: WWW.SITEPRO1.COM/PATENTS

PROPRIETARY NOTE:
THE DATA AND TECHNIQUES CONTAINED IN THIS DRAWING ARE PROPRIETARY INFORMATION OF VALMONT INDUSTRIES AND CONSIDERED A TRADE SECRET. ANY USE OR DISCLOSURE WITHOUT THE CONSENT OF VALMONT INDUSTRIES IS STRICTLY PROHIBITED.

DESCRIPTION

FLEXIBLE RING MOUNT
4-SIDED HEAVY-DUTY ASSEMBLY

CPD NO. NCS		DRAWN BY NSP 5/23/2024		ENG. APPROVAL BMC 12/6/2024	
CLASS 87	SUB 02	DRAWING USAGE CUSTOMER		CHECKED BY CSL 12/6/2024	

SITE
PRO

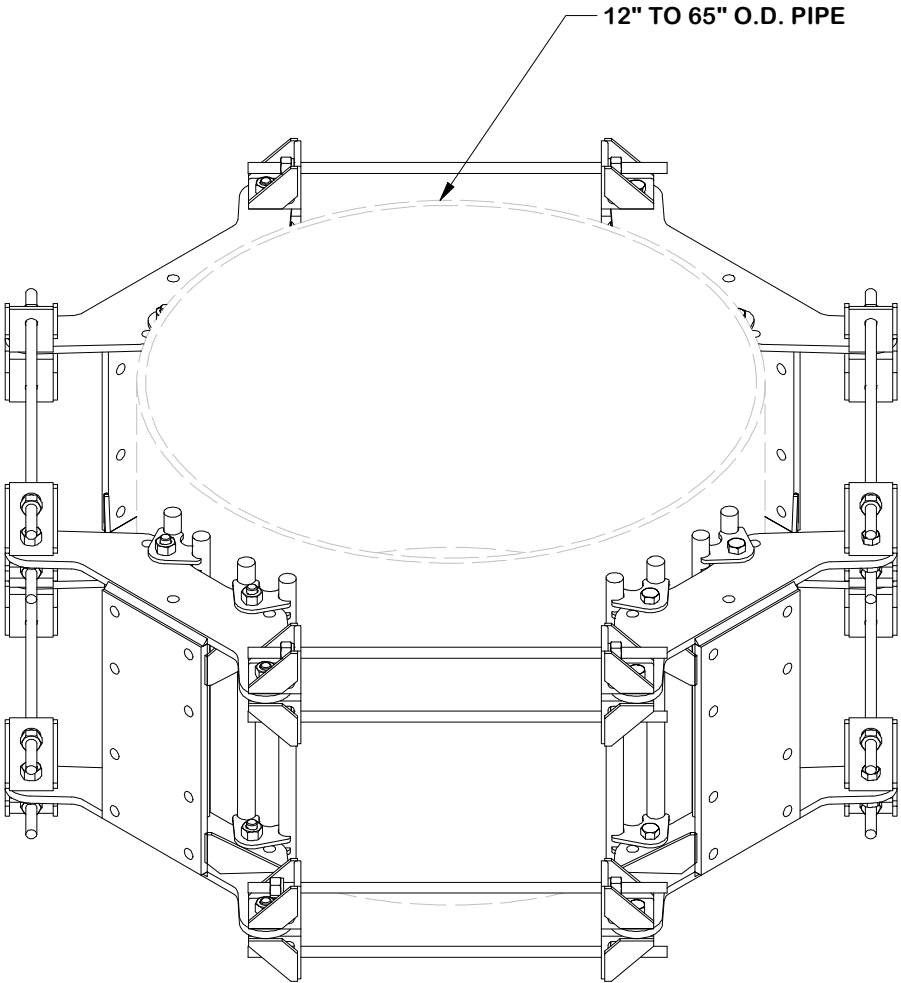
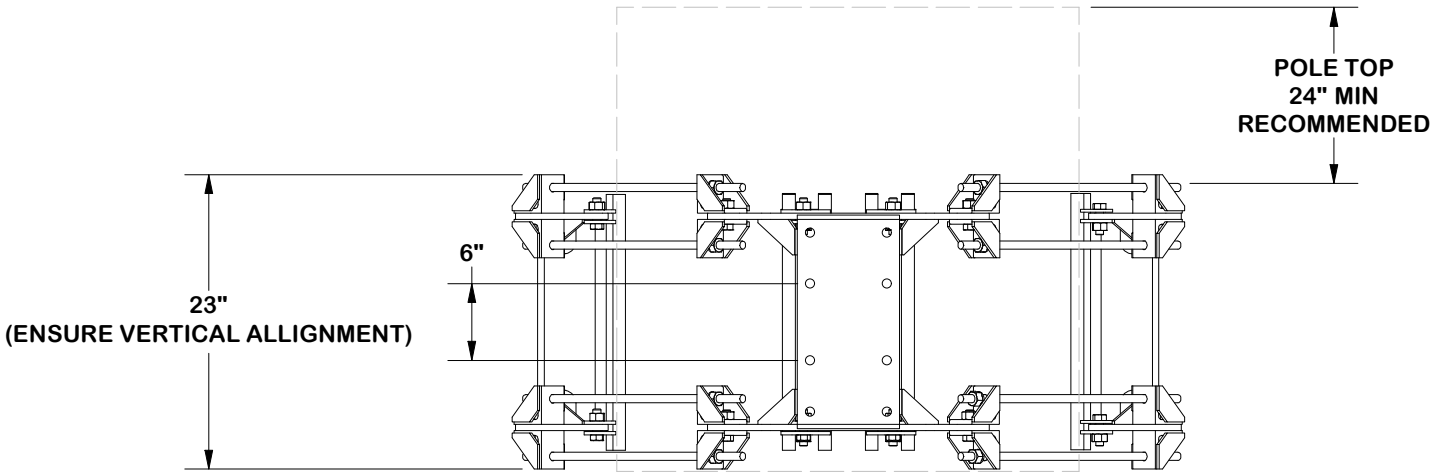
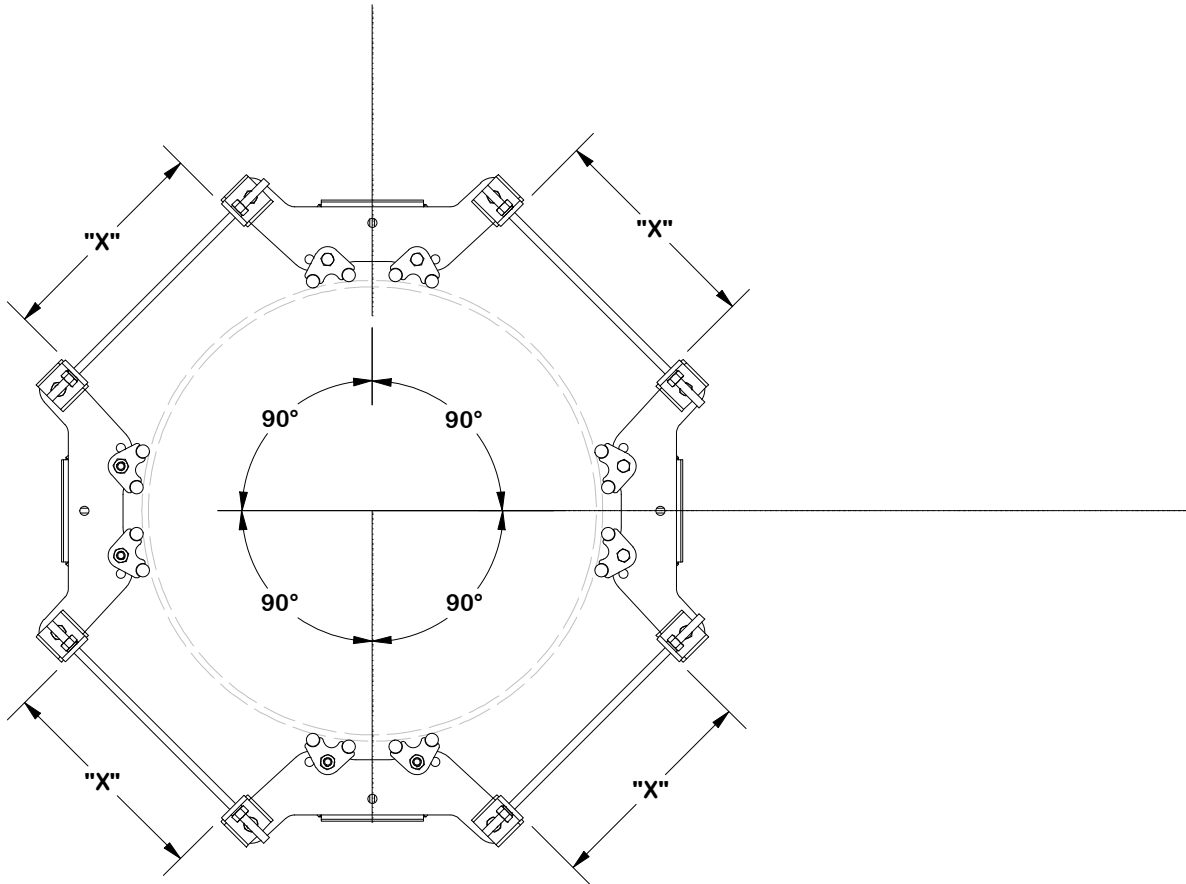
1

A valmont COMPANY

Engineering
Support Team:
sp1engineering@valmont.com

PART NO.	FLX4-HD	PAGE 1 OF 5
DWG. NO.	FLX4-HD	

NOTE:
ENSURE EQUAL DISTANCE
BETWEEN BRACKETS "X"
AND AT 120° APART



TOLERANCE NOTES

TOLERANCES ON DIMENSIONS, UNLESS OTHERWISE NOTED ARE:
SAWED, SHEARED AND GAS CUT EDGES ($\pm 0.030"$)
DRILLED AND GAS CUT HOLES ($\pm 0.030"$) - NO CONING OF HOLES
LASER CUT EDGES AND HOLES ($\pm 0.010"$) - NO CONING OF HOLES
BENDS AND ANGLES ARE $\pm 1/2$ DEGREE
ALL OTHER MACHINING ($\pm 0.030"$)
ALL OTHER ASSEMBLY ($\pm 0.060"$)

PATENT INFORMATION: WWW.SITEPRO1.COM/PATENTS

PROPRIETARY NOTE:
THE DATA AND TECHNIQUES CONTAINED IN THIS DRAWING ARE PROPRIETARY INFORMATION OF VALMONT INDUSTRIES AND CONSIDERED A TRADE SECRET. ANY USE OR DISCLOSURE WITHOUT THE CONSENT OF VALMONT INDUSTRIES IS STRICTLY PROHIBITED.

DESCRIPTION

FLEXIBLE RING MOUNT
4-SIDED HEAVY-DUTY ASSEMBLY

CPD NO.

NCS

DRAWN BY

NSP 5/23/2024

ENG. APPROVAL

BMC 12/6/2024

CLASS

87

SUB

02

DRAWING USAGE

CUSTOMER

CHECKED BY

CSL 12/6/2024

PART NO.

FLX4-HD

DWG. NO.

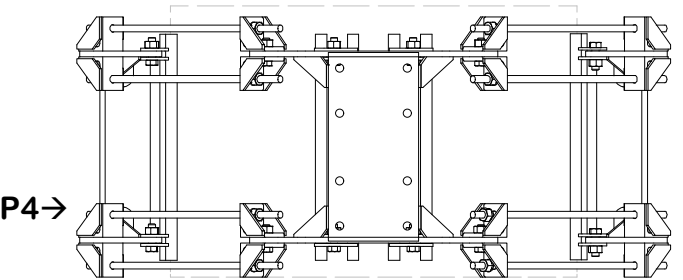
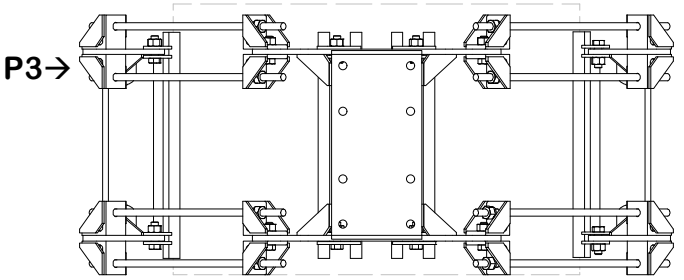
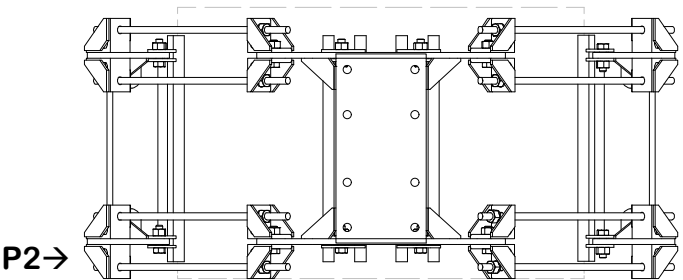
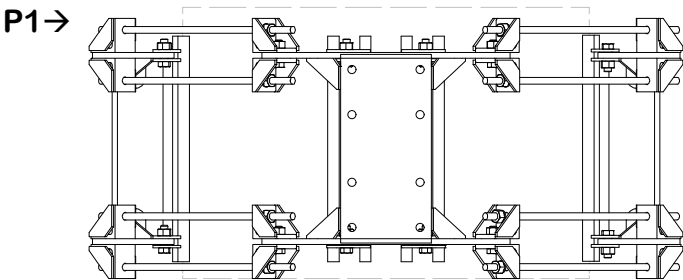
FLX4-HD



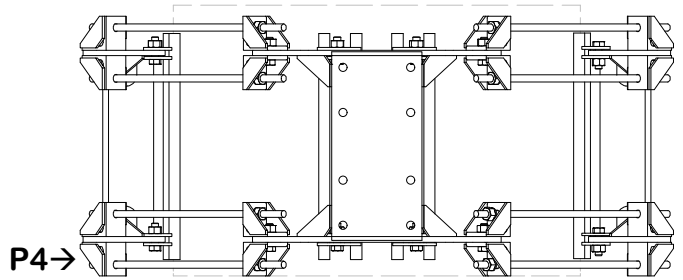
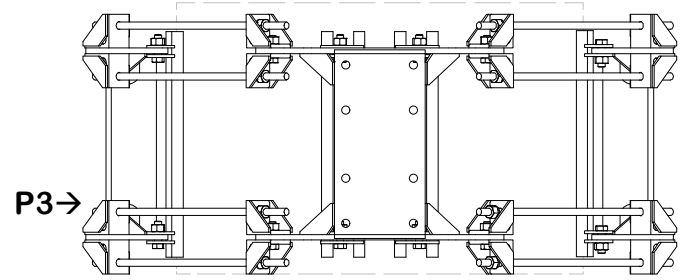
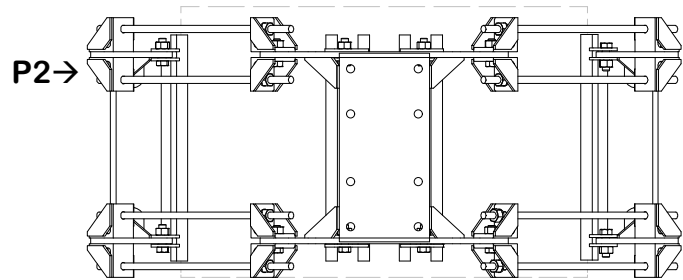
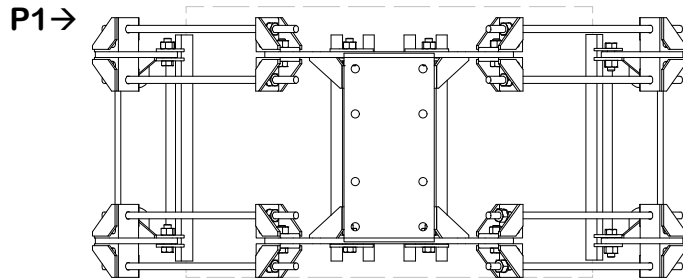
A valmont COMPANY

Engineering
Support Team:
sp1engineering@valmont.com

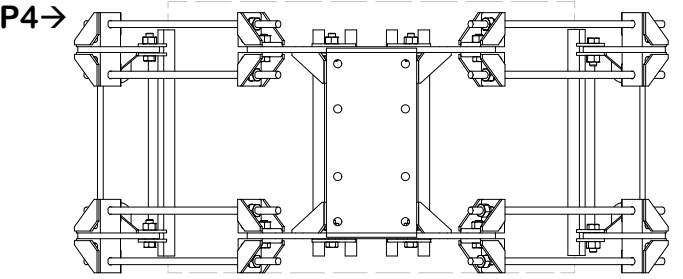
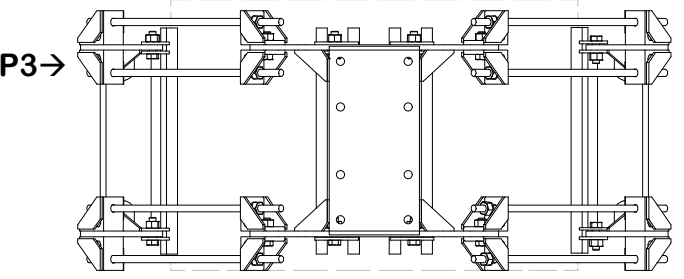
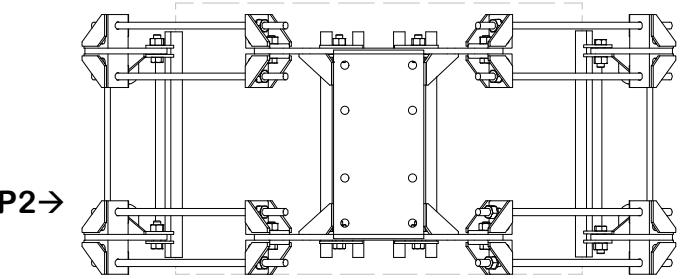
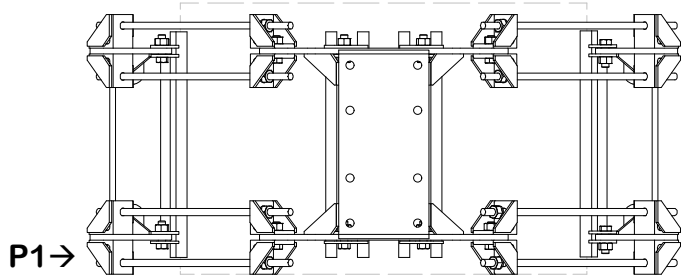
INSTALL ORDER



INITIAL TIGHTENING



FINAL TIGHTENING



TOLERANCE NOTES

TOLERANCES ON DIMENSIONS, UNLESS OTHERWISE NOTED ARE:
SAWED, SHEARED AND GAS CUT EDGES ($\pm 0.030"$)
DRILLED AND GAS CUT HOLES ($\pm 0.030"$) - NO CONING OF HOLES
LASER CUT EDGES AND HOLES ($\pm 0.010"$) - NO CONING OF HOLES
BENDS AND ANGLES ARE $\pm 1/2$ DEGREE
ALL OTHER MACHINING ($\pm 0.030"$)
ALL OTHER ASSEMBLY ($\pm 0.060"$)

PATENT INFORMATION: WWW.SITEPRO1.COM/PATENTS

PROPRIETARY NOTE:
THE DATA AND TECHNIQUES CONTAINED IN THIS DRAWING ARE PROPRIETARY INFORMATION OF VALMONT INDUSTRIES AND CONSIDERED A TRADE SECRET. ANY USE OR DISCLOSURE WITHOUT THE CONSENT OF VALMONT INDUSTRIES IS STRICTLY PROHIBITED.

DESCRIPTION

FLEXIBLE RING MOUNT
4-SIDED HEAVY-DUTY ASSEMBLY

CPD NO.

NCS

DRAWN BY

NSP 5/23/2024

ENG. APPROVAL

BMC 12/6/2024

CLASS

87

SUB

02

DRAWING USAGE

CUSTOMER

CHECKED BY

CSL 12/6/2024



A valmont COMPANY

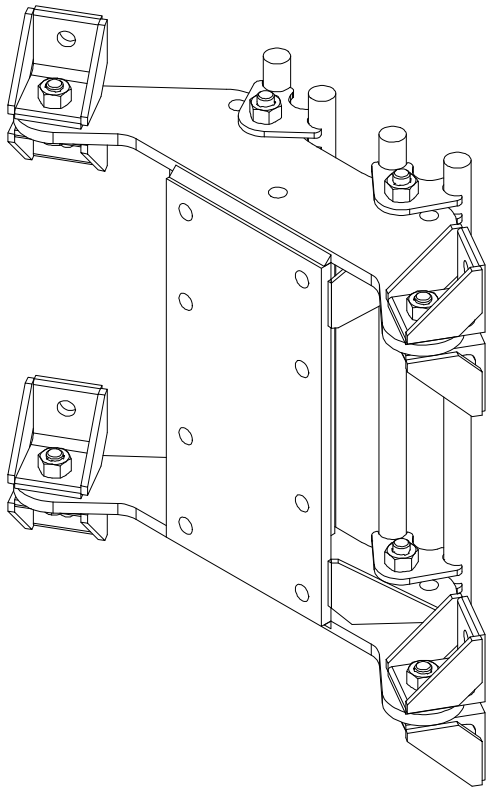
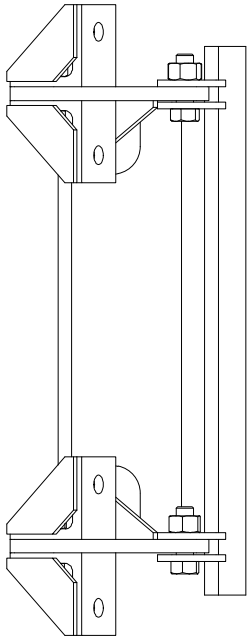
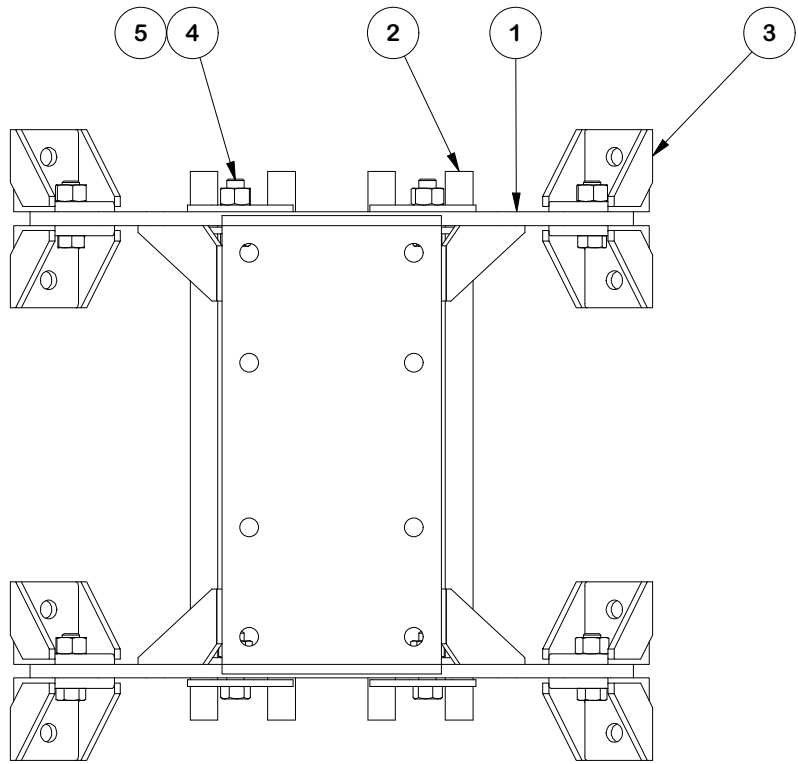
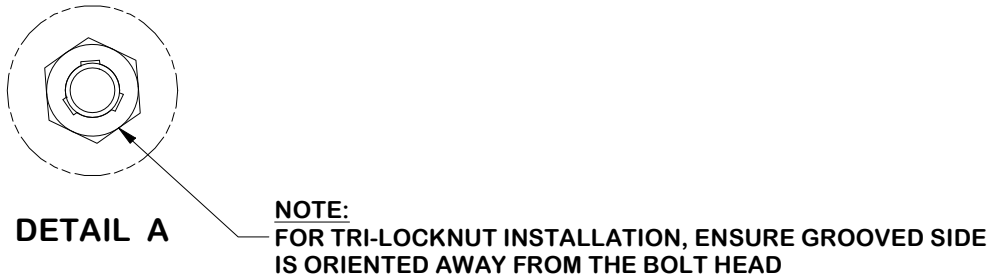
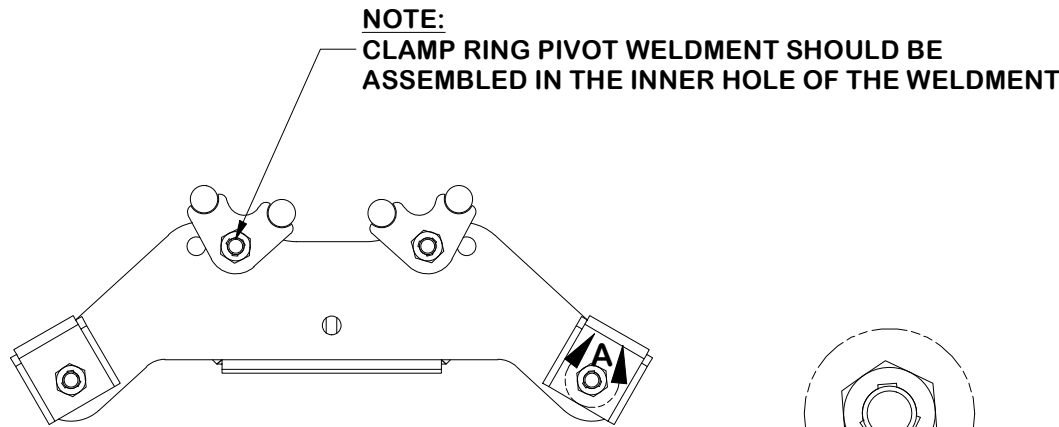
Engineering
Support Team:
sp1engineering@valmont.com

PART NO.

FLX4-HD

DWG. NO.

FLX4-HD



PARTS LIST					
ITEM	QTY	PART NO.	PART DESCRIPTION	UNIT WT.	NET WT.
1	1	X-CR-HDW	HEAVY FLEXIBLE RING MOUNT	55.25	55.25
2	2	X-CR-PW20	20" CLAMP RING PIVOT WELDMENT	11.12	22.25
3	8	X-CR-AGW	ANGLE ON WELDMENT	2.20	17.57
4	8	G5802	5/8" x 2" HDG HEX BOLT GR5	0.27	2.16
5	8	G58TRI-LNUT	5/8" HDG HEAVY 2H TRI-LOCK NUT	0.14	1.10
TOTAL WT. #					98.32

FINISH:
HOT DIP GALVANIZED.

TOLERANCE NOTES

TOLERANCES ON DIMENSIONS, UNLESS OTHERWISE NOTED ARE:
SAWED, SHEARED AND GAS CUT EDGES ($\pm 0.030"$)
DRILLED AND GAS CUT HOLES ($\pm 0.030"$) - NO CONING OF HOLES
LASER CUT EDGES AND HOLES ($\pm 0.010"$) - NO CONING OF HOLES
BENDS AND ANGLES ARE $\pm 1/2$ DEGREE
ALL OTHER MACHINING ($\pm 0.030"$)
ALL OTHER ASSEMBLY ($\pm 0.060"$)

PATENT INFORMATION: WWW.SITEPRO1.COM/PATENTS

PROPRIETARY NOTE:
THE DATA AND TECHNIQUES CONTAINED IN THIS DRAWING ARE PROPRIETARY INFORMATION OF VALMONT INDUSTRIES AND CONSIDERED A TRADE SECRET. ANY USE OR DISCLOSURE WITHOUT THE CONSENT OF VALMONT INDUSTRIES IS STRICTLY PROHIBITED.

DESCRIPTION

**FLEXIBLE RING MOUNT
4-SIDED HEAVY-DUTY ASSEMBLY**

CPD NO. NCS		DRAWN BY NSP 5/23/2024	ENG. APPROVAL BMC 12/6/2024
CLASS 87	SUB 02	DRAWING USAGE CUSTOMER	CHECKED BY CSL 12/6/2024

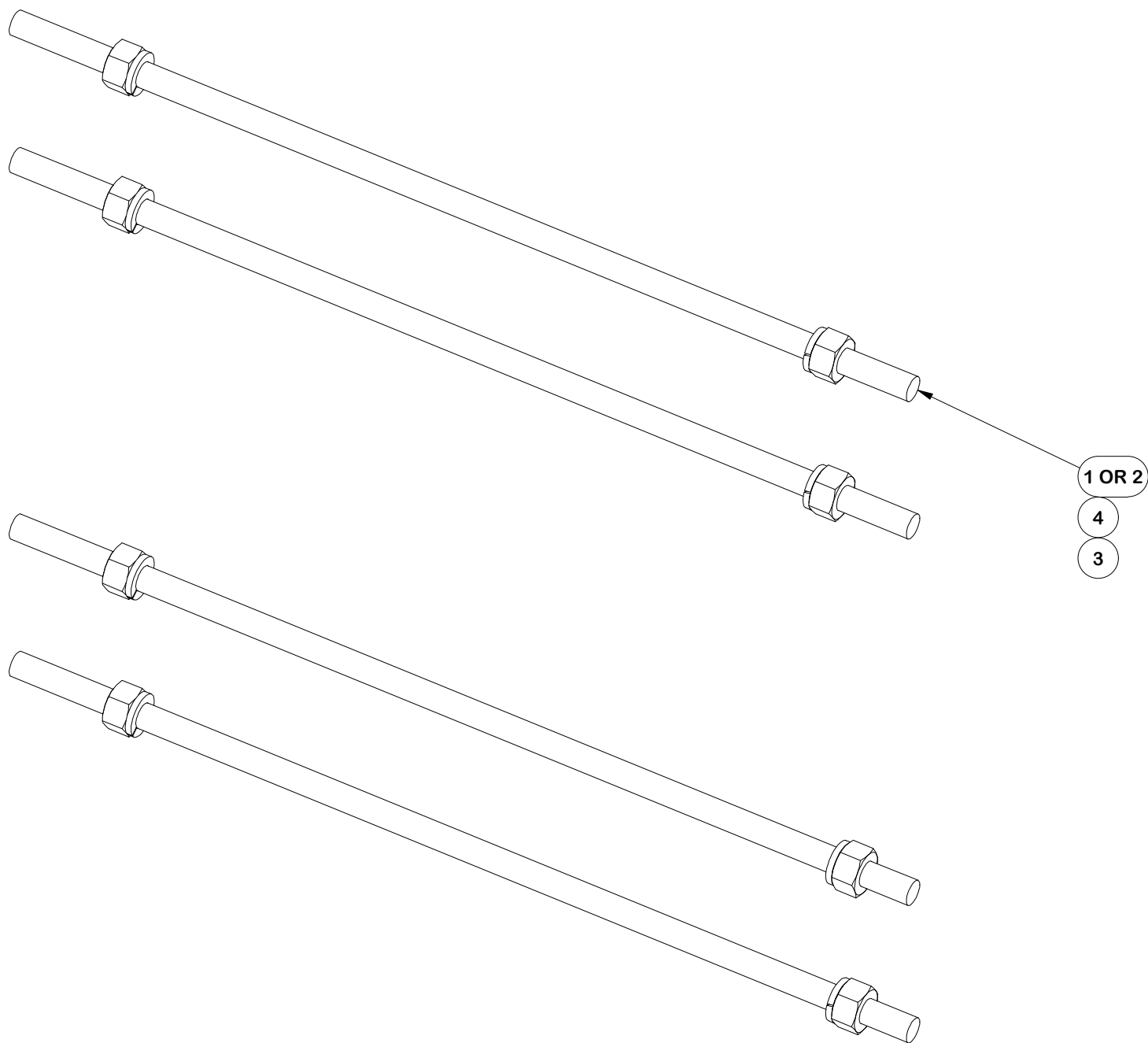
SITE PRO 1

A valmont COMPANY

Engineering Support Team:
sp1engineering@valmont.com

PART NO. FLX-HDSS	PAGE 4 OF 5
DWG. NO. FLX4-HD	

PARTS LIST					
ITEM	QTY	PART NO.	PART DESCRIPTION	UNIT WT.	NET WT.
1	4	G58R-48	5/8" X 48" GALV THREADED ROD	4.39	17.56
2	4	G58R-24	5/8" X 24" THREADED ROD (HDG.)	2.22	8.87
3	8	G58LW	5/8" HDG LOCKWASHER	0.03	0.21
4	8	G58NUT	5/8" HDG HEAVY 2H HEX NUT	0.13	1.04
				TOTAL WT. #	28.30



FINISH:
HOT DIP GALVANIZED.

			TOLERANCE NOTES				<div>DESCRIPTION</div> <div>FLEXIBLE RING MOUNT 4-SIDED HEAVY-DUTY ASSEMBLY</div>				<div><div><div>SITE PRO 1</div><div>Engineering Support Team: sp1engineering@valmont.com</div></div><div>A valmont COMPANY</div></div>			
			TOLERANCES ON DIMENSIONS, UNLESS OTHERWISE NOTED ARE: SAWED, SHEARED AND GAS CUT EDGES ($\pm 0.030''$) DRILLED AND GAS CUT HOLES ($\pm 0.030''$) - NO CONING OF HOLES LASER CUT EDGES AND HOLES ($\pm 0.010''$) - NO CONING OF HOLES BENDS AND ANGLES ARE $\pm 1/2$ DEGREE ALL OTHER MACHINING ($\pm 0.030''$) ALL OTHER ASSEMBLY ($\pm 0.060''$)				CPD NO. NCS		DRAWN BY NSP 5/23/2024		ENG. APPROVAL BMC 12/6/2024		PART NO. HDRM-HW	
			PATENT INFORMATION: WWW.SITEPRO1.COM/PATENTS				CLASS 87	SUB 02	DRAWING USAGE CUSTOMER		CHECKED BY CSL 12/6/2024		DWG. NO. FLX4-HD	
			PROPRIETARY NOTE: THE DATA AND TECHNIQUES CONTAINED IN THIS DRAWING ARE PROPRIETARY INFORMATION OF VALMONT INDUSTRIES AND CONSIDERED A TRADE SECRET. ANY USE OR DISCLOSURE WITHOUT THE CONSENT OF VALMONT INDUSTRIES IS STRICTLY PROHIBITED.											